

ShenZhen JunAn Software Technology Co.,Ltd.

ShenZhen JunAn Software Technology Co.,Ltd.

Best Safe Driving Assist Technology and Intelligent Imaging Solutions Provider

JunAn Technology focused on the development of driving safety and Car DVR products, covering a full range of services, from research , product planning, design, producing and so on. Products include Combos, FHD Car DVRS, GPS radar detector, intelligent TPMS and other professional driving safety intelligent equipment

Junan Technology, research department is located in Korea and Shenzhen, with more than 300 experienced staffs. The total factory area in shenzhen is more than 10,000 square meters. With the introduction of new Siemens and South Korea Samsung SMT equipment, helps the production capacity arrived at 3 million units / year, ranking first in the industry.



Tel: +86 755-86968806
Fax: +86 755-86968812
Web: www.ijunan.com

R&D center address: 505-B3 Building, Kexing Science Park, Keyuan Road, Nanshan District, Shenzhen, Guangdong, China.
Manufacturing address: 3F-3 Building, JiangYiDa Industrial Park, MingSheng Road 3, LiaoKeng New Village, Baoan District, ShenZhen.



Tire Pressure Monitoring System

TPMS

Commercial vehicle series



TPMS TDS100



Embedded

- Sensor built-in installation
- It requires professional installation tire removal tool
- Provide a power line to truck VCC
- Monitor can support up to 18 tire pressure, temperature and battery voltage cycle
- High-definition 2.8-inch black/white LCD display
- Integration of alarm functions such as low pressure, high pressure, high temperature, and leakage
- Real-time tire data monitoring
- Visual/Audible alarm
- Wireless transmission



TN200 Bandage Sensor



TW100 External sensor



TN100 Valve type sensor



Repeater

TN200 Bandage Sensor

Operating frequency: 433.92MHz \pm 30KHz
Operating current: < 10mA
Static current: < 0.7 μ A
Operating temperature: $-40^{\circ}\text{C}\sim+125^{\circ}\text{C}$
Storage temperature: $-40^{\circ}\text{C}\sim+125^{\circ}\text{C}$
Battery model: CR2450 (550mAh)
Battery lifespan: \geq 5years
Pressure range: 0~14Bar/0~203Psi
Pressure Accuracy: \pm 0.1Bar/ \pm 1.5Psi
Temperature Accuracy: \pm 3 $^{\circ}\text{C}$
Weight: 59g \pm 0.5g (without bandage)

Repeater

Operating frequency: 433.92MHz
Operating voltage: DC12V~DC32V
Operating current: \leq 50mA
Operating temperature: $-40^{\circ}\text{C}\sim+85^{\circ}\text{C}$
Storage temperature: $-40^{\circ}\text{C}\sim+125^{\circ}\text{C}$
Power supply: Trunk power
RF Transmitter power: <10dbm
RF receiver sensitivity: < -105dbm

TW100 External sensor

Operating frequency: 433.92MHz \pm 30KHz
Operating current: < 10mA
Static current: < 0.7 μ A
Operating temperature: $-30^{\circ}\text{C}\sim+60^{\circ}\text{C}$
Storage temperature: $-40^{\circ}\text{C}\sim+125^{\circ}\text{C}$
Battery model: CR1632 (140mAh)
Battery lifespan: > 1years
Pressure range: 0~14Bar/0~203Psi
Pressure Accuracy: \pm 0.1Bar/ \pm 1.5Psi
Temperature Accuracy: \pm 3 $^{\circ}\text{C}$
Weight: 9g \pm 0.5g

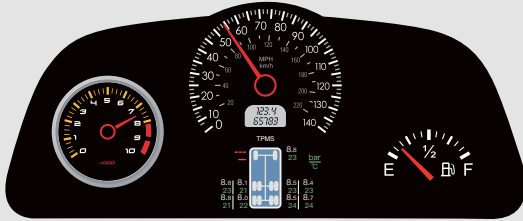
Receiver

Operating frequency: 433.92MHz \pm 68KHz
HF receive sensitivity: < -105 dBm
Operating voltage: DC12V~DC32V
Working Current: \leq 15mA

TN100 Valve type sensor

Operating frequency: 433.92MHz \pm 30KHz
Operating current: < 10mA
Static current: < 0.7 μ A
Operating temperature: $-40^{\circ}\text{C}\sim+125^{\circ}\text{C}$
Storage temperature: $-40^{\circ}\text{C}\sim+125^{\circ}\text{C}$
Battery model: CR2050 (345mAh)
Battery lifespan: \geq 3years
Pressure range: 0~14Bar/0~203Psi
Pressure Accuracy: \pm 0.1Bar/ \pm 1.5Psi
Temperature Accuracy: \pm 3 $^{\circ}\text{C}$
Weight: 20g \pm 0.5g (without Valve)

TPMS CAN-BUS tire pressure monitoring



- The original car instrument tire pressure
- History data can be downloaded
- Managing all vehicles in large fleets, increase management efficiency
- Two communication ports are optional: CANBUS, RS232



TN200 Bandage Sensor



TW100 External sensor



TN100 Valve type sensor



Repeater



CAN-BUS

TN200 Bandage Sensor

Operating frequency: 433.92MHz \pm 30KHz
 Operating current: < 10mA
 Static current: < 0.7 μ A
 Operating temperature: $-40^{\circ}\text{C}\sim+125^{\circ}\text{C}$
 Storage temperature: $-40^{\circ}\text{C}\sim+125^{\circ}\text{C}$
 Battery model: CR2450 (550mAh)
 Battery lifespan: \geq 5years
 Pressure range: 0~14Bar/0~203Psi
 Pressure Accuracy: \pm 0.1Bar/ \pm 1.5Psi
 Temperature Accuracy: \pm 3 $^{\circ}\text{C}$
 Weight: 59g \pm 0.5g (without bandage)

Repeater

Operating frequency: 433.92MHz
 Operating voltage: DC12V~DC32V
 Operating current: \leq 50mA
 Operating temperature: $-40\sim+85^{\circ}\text{C}$
 Storage temperature: $-40^{\circ}\text{C}\sim+125^{\circ}\text{C}$
 Power supply: Trunk power
 RF Transmitter power: <10dbm
 RF receiver sensitivity: <-105dbm

TW100 External sensor

Operating frequency: 433.92MHz \pm 30KHz
 Operating current: < 10mA
 Static current: < 0.7 μ A
 Operating temperature: $-30^{\circ}\text{C}\sim+60^{\circ}\text{C}$
 Storage temperature: $-40^{\circ}\text{C}\sim+125^{\circ}\text{C}$
 Battery model: CR1632 (140mAh)
 Battery lifespan: > 1years
 Pressure range: 0~14Bar/0~203Psi
 Pressure Accuracy: \pm 0.1Bar/ \pm 1.5Psi
 Temperature Accuracy: \pm 3 $^{\circ}\text{C}$
 Weight: 9g \pm 0.5g

CAN-BUS

Operating frequency: 433.92MHz
 Operating voltage: DC12V~DC32V
 Operating current: \leq 50mA
 Operating temperature: $-40^{\circ}\text{C}\sim+85^{\circ}\text{C}$
 RF receiver sensitivity: <-105dbm

TN100 Valve type sensor

Operating frequency: 433.92MHz \pm 30KHz
 Operating current: < 10mA
 Static current: < 0.7 μ A
 Operating temperature: $-40^{\circ}\text{C}\sim+125^{\circ}\text{C}$
 Storage temperature: $-40^{\circ}\text{C}\sim+125^{\circ}\text{C}$
 Battery model: CR2050 (345mAh)
 Battery lifespan: \geq 3years
 Pressure range: 0~14Bar/0~203Psi
 Pressure Accuracy: \pm 0.1Bar/ \pm 1.5Psi
 Temperature Accuracy: \pm 3 $^{\circ}\text{C}$
 Weight: 20g \pm 0.5g (without Valve)

TPMS TDS200



- Sensor built-in installation
- It requires professional installation tire removal tool
- Provide a power line to truck VCC
- Monitor can support up to 26 tire pressure, temperature and battery voltage cycle
- High-definition 3.5-inch black/white LCD display
- Integration of alarm functions such as low pressure, high pressure, high temperature, and leakage
- Real-time tire data monitoring
- Visual/Audible alarm
- Wireless transmission



TN200 Bandage Sensor



TW100 External sensor



TN100 Valve type sensor



Repeater

TN200 Bandage Sensor

Operating frequency: 433.92MHz \pm 30KHz
 Operating current: < 10mA
 Static current: < 0.7 μ A
 Operating temperature: $-40^{\circ}\text{C}\sim+125^{\circ}\text{C}$
 Storage temperature: $-40^{\circ}\text{C}\sim+125^{\circ}\text{C}$
 Battery model: CR2450 (550mAh)
 Battery lifespan: \geq 5years
 Pressure range: 0~14Bar/0~203Psi
 Pressure Accuracy: \pm 0.1Bar/ \pm 1.5Psi
 Temperature Accuracy: \pm 3 $^{\circ}\text{C}$
 Weight: 59g \pm 0.5g (without bandage)

Repeater

Operating frequency: 433.92MHz
 Operating voltage: DC12V~DC32V
 Operating current: \leq 50mA
 Operating temperature: $-40\sim+85^{\circ}\text{C}$
 Storage temperature: $-40^{\circ}\text{C}\sim+125^{\circ}\text{C}$
 Power supply: Trunk power
 RF Transmitter power: <10dbm
 RF receiver sensitivity: <-105dbm

TW100 External sensor

Operating frequency: 433.92MHz \pm 30KHz
 Operating current: < 10mA
 Static current: < 0.7 μ A
 Operating temperature: $-30^{\circ}\text{C}\sim+60^{\circ}\text{C}$
 Storage temperature: $-40^{\circ}\text{C}\sim+125^{\circ}\text{C}$
 Battery model: CR1632 (140mAh)
 Battery lifespan: > 1years
 Pressure range: 0~14Bar/0~203Psi
 Pressure Accuracy: \pm 0.1Bar/ \pm 1.5Psi
 Temperature Accuracy: \pm 3 $^{\circ}\text{C}$
 Weight: 9g \pm 0.5g

Receiver

Operating frequency: 433.92MHz \pm 68KHz
 HF receive sensitivity: < -105 dBm
 Operating voltage: DC12V~DC32V
 Working Current: \leq 15mA

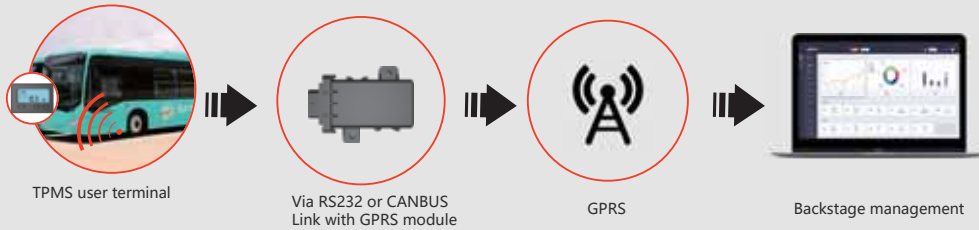
TN100 Valve type sensor

Operating frequency: 433.92MHz \pm 30KHz
 Operating current: < 10mA
 Static current: < 0.7 μ A
 Operating temperature: $-40^{\circ}\text{C}\sim+125^{\circ}\text{C}$
 Storage temperature: $-40^{\circ}\text{C}\sim+125^{\circ}\text{C}$
 Battery model: CR2050 (345mAh)
 Battery lifespan: \geq 3years
 Pressure range: 0~14Bar/0~203Psi
 Pressure Accuracy: \pm 0.1Bar/ \pm 1.5Psi
 Temperature Accuracy: \pm 3 $^{\circ}\text{C}$
 Weight: 20g \pm 0.5g (without Valve)

Remote Monitoring of Tire Pressure Monitoring System Solution for Commercial Vehicles

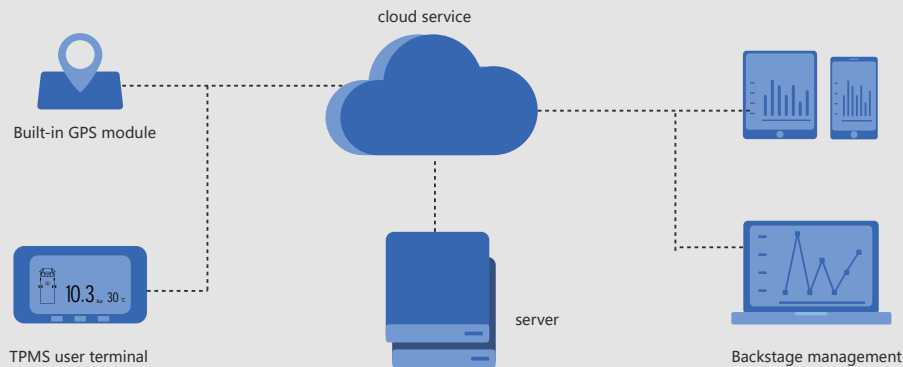
1 Combined solutions:

The TDS100&TDS200&CAN-BUS receiving unit has reserved serial communication lines. Integrating the GPS units with the user's current fleet management system, helps monitoring the tire pressure tire temperature data, which increasing tire service life and reducing operating costs.



2 Module customization program:

with the built-in 4G card and GPS positioning module of the wireless receiver, real-time monitoring of tire pressure, tire temperature and position can be achieved on any network. So as to improve the service life of the tires and reduce the operating costs of the company!



Tire Pressure Monitoring System

TPMS

car series

TPMS Special car

- Reliable and easy to install
- Advanced American Freescale 6-in-1 wireless sensors
- Real-time tire pressure and temperature monitoring
- Integration of alarm functions such as low pressure, high pressure, high temperature, and leakage
- Inter valve sensors, adjustable sensor mounting angle, water resistant
- Sensors batteries will last up to five years(you can replace the battery Autonomously, do not need to return to manufacturers)



- Embedded monitor, specified for TOYOTA(suitable for RAV4, Corolla, REIZ, Camry,Highlander, PRADO, E'Z, LAND CRUISER 200, Prius,HIACE,COROLLA,Yaris,COASTER,Outlander which have a 34*23.5mm hole)



CW100 external sensor

CN200 internal sensor



External sensor

Operating frequency: 433.92MHz±30KHz
 Operating voltage: 2.1~3.6V
 Operating current: ≤10mA
 Static current: ≤1uA
 Operating temperature: -20°C~+60°
 Storage temperature: -20 °C~+85°C
 Battery life: ≥2 years (the battery can be replacement)
 Weight: 9g ±1g
 Certificates: CE, FCC and RoHs

Internal sensor

Operating frequency: 433.92MHz ±30KHz
 Operating voltage: 2.1~3.6V
 Operating current: ≤10mA
 Static current: ≤1uA
 Operating temperature: -40°C~+125°C
 Storage temperature: -40°C~+125°C
 Battery model: CR2050
 Battery lifespan: ≥5years
 Weight:36g ± 1g
 Certificates: CE, FCC and RoHs

Receiver

Working Voltage:12V
 Working temperature:-20°C~+80°C
 Storage temperature:-30°C~+85°C
 Frequencies: 433.92MHz

TPMS Solar tire pressure monitoring



- High-definition colorful LCD display, simultaneously show 4 tires pressure
- Pressure range: 0~8Bar / 0~116PSI
- Sensor preset in factory
- Display can be charged by solar energy or mini USB charging slot
- Intelligent design for power saving of display
- Self-testing for each power on
- High-capacity battery, can be used normally two months
- End users can set the threshold of tire pressure
- Convertible pressure unit (PSI / Bar)
- Sleeping mode available, Built-in G-sensor, can be wake up immediately when the car is moving.
- Display with visual and audible warning for tire pressure and temperature
- Low display battery warning
- From the car stop to start, Sensor can be wake up in 5s

Technical specifications for display

- Operating frequency: 433.92MHz
- Operating current: ≤7mA
- Static current: ≤100uA
- Operating voltage: 4.5~6V
- Operating temperature: -25°C~+85°C
- Built-in battery capacity: 3.7V/500mA



CDS100



CDS300



CDS500



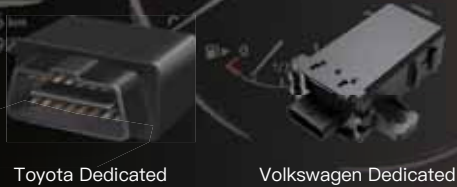
CDS600



CDS700

TPMS OBD tire pressure monitoring

- Real-time four-wheel monitoring, wireless transmission
- Accurate digital display of the original car instrument
- OBD connection, compatible with the original car menu key switch
- Automatic positioning, well warranty service after-sales



Toyota Dedicated

Volkswagen Dedicated



CW100 external sensor



CN200 internal sensor



Toyota Receiver

Working Voltage: 12V
 Operating current: $\leq 10\text{mA}$
 Static current: $\leq 2\text{mA}$
 Working temperature: $-40^{\circ}\text{C} \sim +85^{\circ}\text{C}$
 Storage temperature: $-40^{\circ}\text{C} \sim +85^{\circ}\text{C}$
 Frequencies: 433.92MHz

External sensor

Operating frequency: 433.92MHz $\pm 30\text{KHz}$
 Operating voltage: 2.1~3.6V
 Operating current: $\leq 10\text{mA}$
 Static current: $\leq 1\mu\text{A}$
 Operating temperature: $-20^{\circ}\text{C} \sim +60^{\circ}$
 Storage temperature: $-20^{\circ}\text{C} \sim +85^{\circ}\text{C}$
 Battery life: ≥ 2 years (the battery can be replacement)
 Weight: 9g $\pm 1\text{g}$
 Certificates: CE, FCC and RoHs

Internal sensor

Operating frequency: 433.92MHz $\pm 30\text{KHz}$
 Operating voltage: 2.1~3.6V
 Operating current: $\leq 10\text{mA}$
 Static current: $\leq 1\mu\text{A}$
 Operating temperature: $-40^{\circ}\text{C} \sim +125^{\circ}\text{C}$
 Storage temperature: $-40^{\circ}\text{C} \sim +125^{\circ}\text{C}$
 Battery model: CR2050
 Battery lifespan: ≥ 5 years
 Weight: 36g $\pm 1\text{g}$
 Certificates: CE, FCC and RoHs

Volkswagen Receiver

Operating frequency: 433.92MHz
 Operating voltage: DC12V
 Operating current: $< 100\text{mA}$
 Operating temperature: $-40 \sim +85^{\circ}\text{C}$
 Storage temperature: $-40^{\circ}\text{C} \sim +85^{\circ}\text{C}$
 Power supply: car power

TPMS USB tire pressure monitoring



- Only for Android System DVD, and download a APP from web to your dvd and the dvd can monitor the status of tire.
- Tire pressure and temperature could be shown directly on android system DVD display screen
- Tire date of pressure and temperature send to DVD by usb port
- Warning parameter settable
- Pressure and temperature alarm in time
- Four-wheel information showed meanwhile
- It does not affect the normal function of the DVD'S



CW100 External sensor



CN200 Internal sensor



USB receiver

External sensor

Operating frequency: 433.92MHz $\pm 30\text{KHz}$
 Operating voltage: 2.1~3.6V
 Operating current: $\leq 10\text{mA}$
 Static current: $\leq 1\mu\text{A}$
 Operating temperature: $-20^{\circ}\text{C} \sim +85^{\circ}$
 Storage temperature: $-20^{\circ}\text{C} \sim +60^{\circ}\text{C}$
 Battery life: ≥ 2 years (the battery can be replacement)
 Weight: 9g $\pm 1\text{g}$
 Certificates: CE, FCC and RoHs

Internal sensor

Operating frequency: 433.92MHz $\pm 30\text{KHz}$
 Operating voltage: 2.1~3.6V
 Operating current: $\leq 10\text{mA}$
 Static current: $\leq 1\mu\text{A}$
 Operating temperature: $-40^{\circ}\text{C} \sim +125^{\circ}\text{C}$
 Storage temperature: $-40^{\circ}\text{C} \sim +125^{\circ}\text{C}$
 Battery model: CR2050
 Battery lifespan: ≥ 5 years
 Weight: 36g $\pm 1\text{g}$
 Certificates: CE, FCC and RoHs

USB receiver

Interface mode: plug in USB
 Power supply: DC5V USB power supply
 Working temperature: $-40^{\circ}\text{C} \sim 85^{\circ}\text{C}$
 Receiver size: 66*44*12mm, length 200mm.